

LEASING MANAGEMENT

OFFICE | COMMERCIAL | RETAIL | RESIDENTIAL

Ongoing Management of Leasing Spaces

In just one click, the Leasing Management tool creates a global image of vacant spaces for a building or an entire portfolio. It automatically generates and customizes technical specs sheets without the need of a third party. Specs sheets are available online to send to potential clients and are accessible from any mobile devices. This tool also produces occupancy simulations with lease expiry date for any given year.

Smart Property Management

Since 1995, Archidata offers a web solution for real estate managers. The plans archived on the Archidata platform are leveraged by extracting the information needed for space management and making it accessible rapidly and securely.

RELIABLE INFORMATION WHEN YOU NEED IT!

The Archidata Solution integrates with existing management systems. It is a global solution that follows the life cycle of a building. Our platform offers a set of tools for three sectors of activities: assets, buildings and projects. Many tools are offered to provide reliable information for all real estate activities.

CANADA

Toll free: 1-866-870-1770
MONTREAL (Head Office)
TORONTO

INTERNATIONAL

Toll free: 1-855 870-1770
NEW YORK

archidata.com

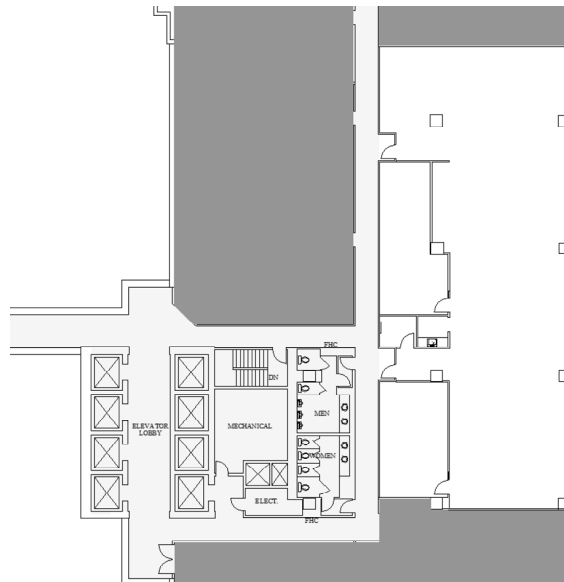


Company Name

SPACE FOR LEASE

101 Alaska Parkway
Suite 200

CONTACT INFORMATION
Arthur Miller | Senior Man, Leasing | (905) 555-2214
amiller@companyname.com



SUITE VIEW



ADDRESS

101 Alaska Parkway
Toronto Canada L3R 9T8

INFORMATION

SUITE: Second floor, Suite 200
RENTABLE AREA: 4,605 sq. ft.
In close proximity to several restaurants, banking, fitness centre within complex, golf courses, hotel and conference centres.



KEY PLAN

▲ Leasing specs sheet

▼ Search engine

LEASING

- Search Engine
- Modify Building

STACKING

LEASING INFORMATION

- Office
- Industrial
- Retail
- Governmental

LEASING SPACE TYPE

By Floor

By Unit

Archidata Properties Inc.

[API] Archidata Properties Inc.

[MPL] Millennium Place

[M01] 68 Wellington Street West - BOMA 96

HOME

REGION

COMPLEX

BUILDING

Building Information

Building Code	M01
Building Name	68 Wellington Street West - BOMA 96
Address 1	68 Wellington Street
Address 2	West
City	New York
State/Province	Choose province/State...
Zip Code	NY 10007
Country	Canada
Usable Area	734558.80
Rentable Area	417239.14
Parking Ratio	4.0
Typical Floor	23139.0
Building Class	A
Number of Floors	28
Construction Year	1996
Last Renovation	2006
Taxes & Operations	20.40
Net Minimum Rent	25.50
Net Maximum Rent	25.50
Name	Mark Rzadki
Title	Assistant Leasing
Telephone	(212) 634-4408
Email	optic@archidata.com

The centre is a newly constructed business center Downtown's Financial District near the new World Trade Center Development with fully furnished office suites, equipped conference space, reception and IT support on a high floor with great views in a 24/7 doorman Class A office building centrally located with excellent access to the Path Train and most subway lines with express service to Penn Station, Grand Central Station and the Port Authority Bus Terminal and walking distance to the NY Stock Exchange and the court houses at Foley Square.

Page 1 of 1

Record: 1-3 of 3

No	Floor Code	Floor Name	Rentable Area	Units	Floor Plan	Selection
1.	<input type="checkbox"/> M01-11	11th Floor	1,041	1	Floor #101	List of Units
2.	<input type="checkbox"/> M01-12	12th Floor	3,837	1	Floor #102	List of Units
3.	<input type="checkbox"/> M01-16	16th Floor	9,865	2	Floor #106	List of Units

BENEFITS

- Generates automatically specs sheets with corresponding plan
- Saves time in tenant improvements
- Allows fast searches in accordance with criteria such as region, city, building, space, expiry date and leasing option
- Reduces lag time for leasing vacant spaces
- Lowers the risk of square footage misvaluation for leasing

